

INTEGRATED MANUFACTURING SOLUTIONS  
FOR PLASTIC PARTS & COMPONENTS

# Content



- \* Company Profile
- \* Organization Chart
- \* ISO 9001 Quality Policy
- \* ISO 14001 Environmental Policy
- \* Certification
- \* Services
- \* Tooling Equipment & Facilities
- \* Manufacturing Facilities
- Quality & Engineering Measuring Instruments
- Types of Engineering Plastic Used In Injection Moulding Process
- Selected Sources of Engineering Plastics From Europe, US & Japan
- Contact Us

# Company Profile



- ❖ An ISO9001 & ISO14001 certified company providing Integrated Manufacturing Services through subcontracting or customized concept in the manufacturing of parts and components according to the specifications requested by customers.
- ❖ Possesses strong engineering capabilities and good production system management in areas ranging from CAD design, precision mould making, mould & part qualifications, manufacturing controls and quality assurance to meet & satisfy our customer requirements.
- ❖ Specializes in manufacturing parts that use high performance engineering plastics that contain high content of glass-fibre and minerals.
- ❖ Besides catering for the Malaysian market, also exports to other South East Asian countries, China, USA, and EU.



# Services

**polyparts**  
**sdn. bhd.**



1) Design & Fabrication of Precision Moulds

Continue ...





# Services

**polyparts**  
**sdn. bhd.**



2) Injection Moulding of Engineering Plastics & Precision parts

Continue ...



# Services

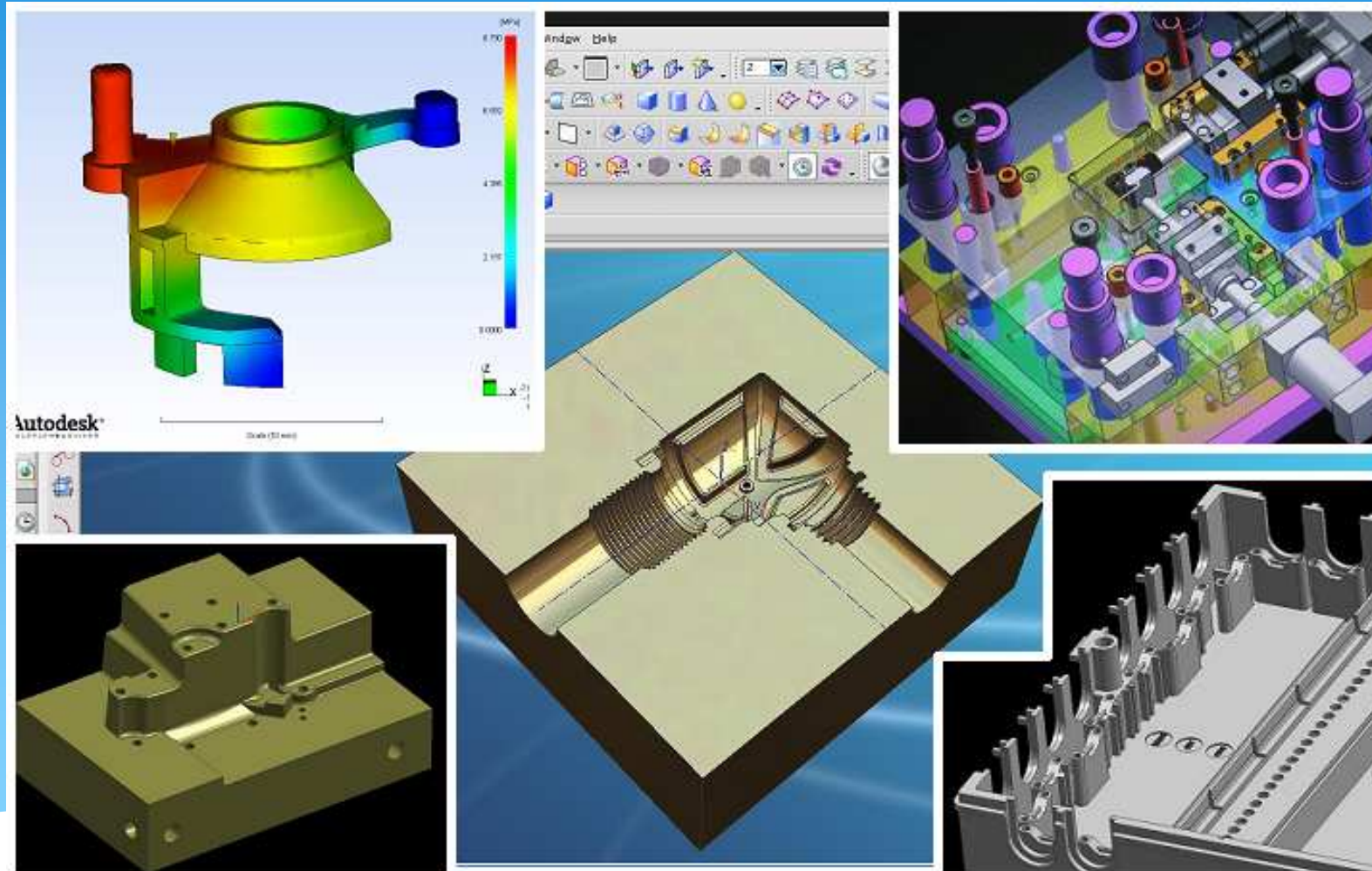


## 3) Secondary Process & Sub Assembly





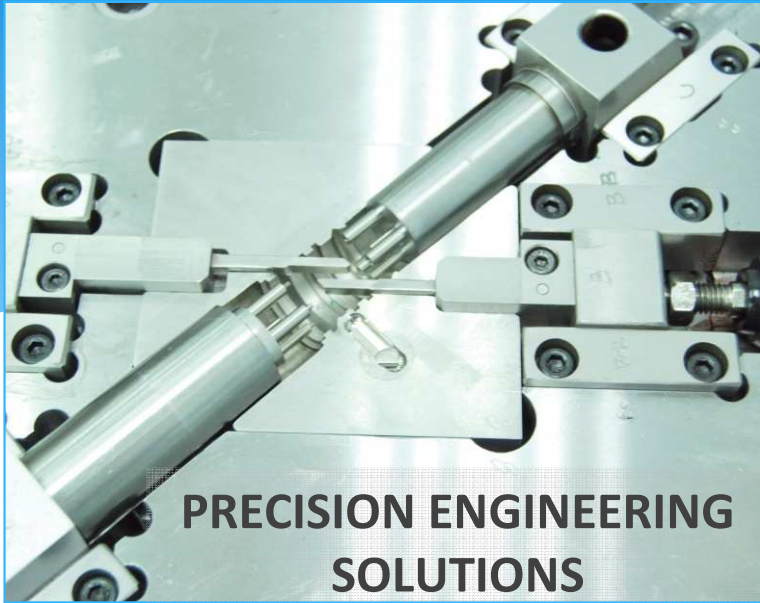
# Services



## 4) Computer Aided Design (CAD) & Rapid Prototyping

[Continue ...](#)





**PRECISION ENGINEERING SOLUTIONS**



**PARTS MADE FROM HIGH PERFORMANCE ENGINEERING PLASTICS**

**polyparts  
sdn. bhd.**

**What can we offer?**



**OUTSOURCING & PRODUCTION COLLABORATION**



**STRATEGIC PARTNERSHIP**

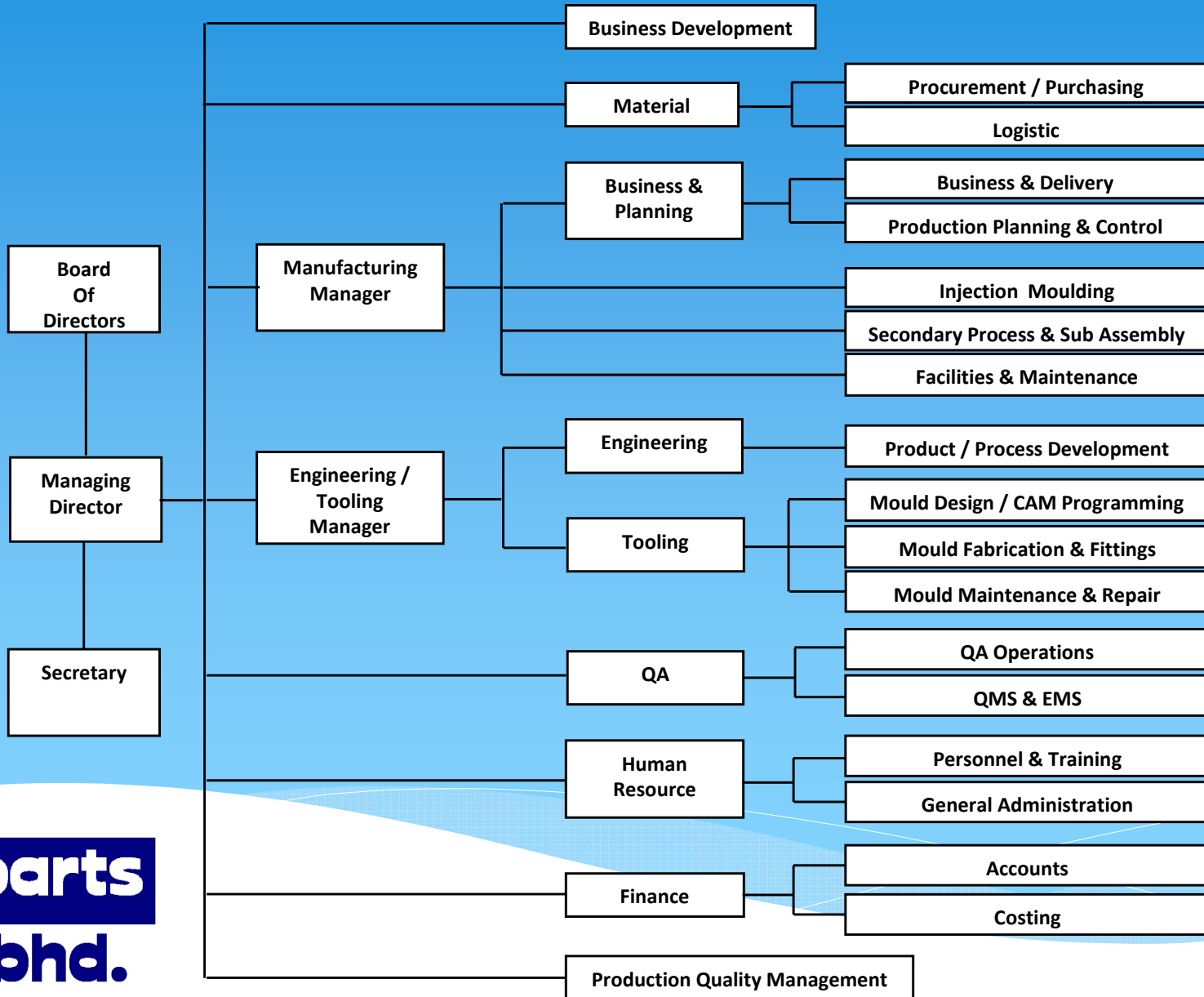


**LOGISTIC HUB & COST OPTIMISATION**





# Organisation Chart



# ISO 9001 Quality Policy



- \* We are committed to ensure quality products and reliable services exceed customer requirements and expectations.
- \* Top and middle management are committed to provide quality leadership and develop all employees to be competent, skillful and knowledgeable.
- \* We pledge to practice in accordance with the requirements of ISO 9001 Quality Management System and persistently enhance its effectiveness.
- \* We pursue actively in the continuous improvement process and strive to achieve the quality objectives.



# ISO 14001 Environmental Policy



- \* To comply with all relevant applicable environmental legislations and regulations.
- \* To forbid the use of prohibited substances in materials and products so to avoid any pollution occurs.
- \* To minimize generation of wastes and release of pollutants.
- \* To optimize the usage of natural resources at all times.
- \* To continually improve our environmental performance by setting & reviewing objectives periodically.





# Management Systems & Certification

**polyparts**  
**sdn. bhd.**



MS ISO 9001:2008 REG. No. AR1005

ISO 9001: 2008 Certified  
Reg. No. AR1005



ISO 14001:2004 REG.No. 863088

ISO 14001: 2004 Certified  
Reg. No. 863088

Click [here](#) to  
view Certificates



Underwriters' Laboratories Inc. for Fabricated Parts  
UL No. E132714

Product Category :

[Plastics – Component] Fabricated Parts - Component



# Certification of Management Systems



## CERTIFICATE



SIRIM QAS International Sdn. Bhd. hereby certifies that

**POLYPARTS SDN. BHD.**  
 NO. 2, PERSIARAN PERINDUSTRIAN SILIBIN 2  
 KAWASAN PERINDUSTRIAN RINGAN SILIBIN  
 30100 IPOH  
 PERAK DARUL RIDZUAN  
 MALAYSIA



MS ISO/IEC 17021:2006  
 GS 02121999 CB 01

has implemented a Quality Management System complying with

**ISO 9001 : 2008**

Quality Management Systems - Requirements



Scope of Certification

- 1) MANUFACTURE OF PRECISION INJECTION MOULDED PLASTIC COMPONENTS, INCLUDING FINISHING & SUB-ASSEMBLY PROCESSES;
- 2) DESIGN, DEVELOPMENT AND FABRICATION OF PRECISION MOULD.



Issue date : 23 April 2010  
 Validity period : 28 February 2009 - 27 February 2012  
 Certification No. : AR 1005

SIRIM QAS International Sdn. Bhd.  
 (Company No. 41032-K) 1, Persiaran Dato' Menteri  
 Section 2, P. O. Box 7035  
 40911 Shah Alam  
 Selangor Darul Ehsan  
 MALAYSIA  
 Tel: 60-3-5544 6404  
 Fax: 60-3-5544 6787  
<http://www.sirim-qas.com.my>  
<http://www.malaysiancertified.com.my>

*Chalidul Mustafa*

**Khalidul Mustafa**  
 Managing Director  
 SIRIM QAS International Sdn. Bhd.

*Y. H. Yahaya Ahmad*

**Ir. Hj. Yahaya Ahmad**  
 Chairman  
 SIRIM QAS International Sdn. Bhd.

This certificate is granted subject to the terms and conditions as stated in the Certification Agreement.

## Certificate of Registration



This is to certify that the  
 Environmental Management Systems of

**Polyparts Sdn Bhd**

No. 1, 2, 4, 6, 8 Persiaran Perindustrian Silibin 2,  
 Kawasan Perindustrian Ringan Silibin, 30100 Ipoh, Perak Darul Ridzuan,  
 Malaysia

have been assessed and found compliant with the requirements of

**ISO 14001:2004**  
**BS EN ISO 14001:2004**

Approval is hereby granted for registration providing the  
 certification rules and conditions are observed at all times.

Certification Scope:

Manufacture of Plastic Injection Moulded Parts and Provision of Secondary  
 Processes

Certificate No. 863088

Issue Date: 2 June 2008

Expiry Date: 1 June 2011

*[Signature]*  
 Authorized Signature

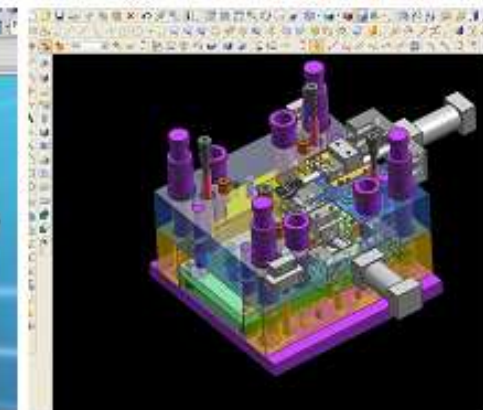
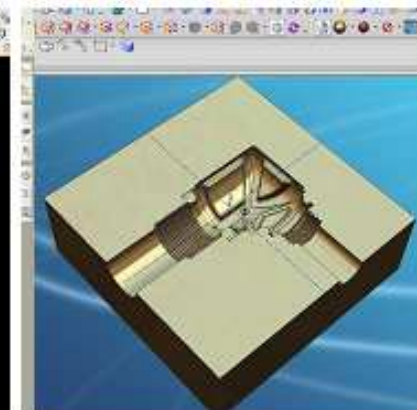
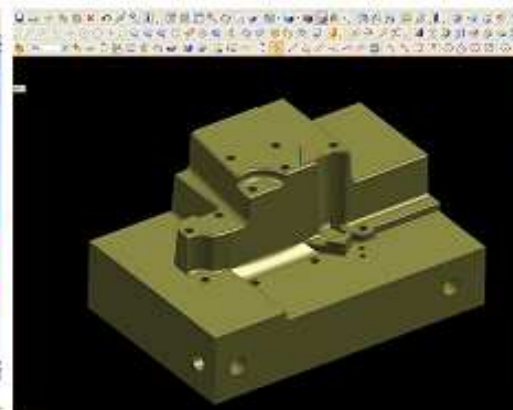
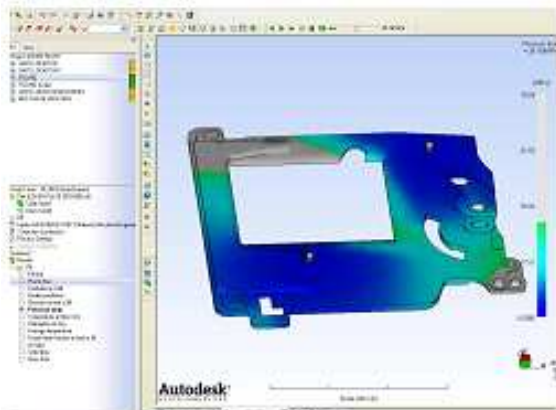
**Moody International Certification Ltd.**

The use of the Accredited Mark indicates accreditation in respect of those activities covered by the Accreditation Certificate 014.  
 The certificate remains the property of Moody International Certification Limited to whom it must be returned on request.



# Tooling Equipment & Facilities

Design Software	
UG CAD/CAM Software NX7 (UG Mould Wizard)	2 units
UG CAD/CAM Software NX7 (Milling Software)	2 units
Autodesk Moldflow Adviser-2010-R2	1 unit
AutoCAD 2005 ICAD Wire-cut program	1 unit
AutoCAD Release 2000i	1 unit





# Tooling Equipment

## CNC Vertical Machining Centre

Makino Machining Center Model S33-A20	1 unit	<a href="#">Photo</a>
Fanuc Robodrill A-Ti4FLb	1 unit	

## CNC Electric Discharge Machine

Sodick AQ 35L	2 units	<a href="#">Photo</a>
Sodick Mould Maker 3 with NF 40 Controller	1 unit	

## CNC Wire-Cut

Sodick A320D Mark E21 Controller	1 unit	<a href="#">Photo</a>
Sodick VZ300L LHZW	1 unit	<a href="#">Photo</a>

Continue ...



## Tooling Equipment (con't)

<b>CNC Milling</b>	
Makino KE 55 with Professional JN CNC Controller	1 unit

<b>Surface Grinding Machines</b>	
Okamoto PFG – 350DX	1 unit
Okamoto PSG – 52ST	1 unit

<b>Lathe Machine</b>	
Leblond Makino Regal 400	1 unit

<b>Milling Machines</b>	
Kondia FV1	1 unit
Topone	2 units





**CNC Vertical Machining Centre**  
Makino Machining Center Model S33-A20







**CNC Wire Cut**  
Sodick A320D Mark E21 Controller





**CNC Wire Cut**  
Sodick VZ300L LHZW





**CNC Electric Discharge Machining**  
Sodick AQ 35L





# Manufacturing Facilities

Injection Moulding Machines	
15MT clamping force	1 unit
20MT clamping force	1 unit
30MT clamping force	2 units
35MT clamping force	1 unit
40MT clamping force	6 units
50MT clamping force	3 units
60MT clamping force	4 units
80MT clamping force	2 units
120MT clamping force	1 unit
160MT clamping force	2 units
250MT clamping force	1 unit



- \* The injection moulding machines from Nissei, Demag, Arburg, Fanuc & Sumitomo (Electric Injection Machine) are equipped with hardened screws and barrels for the running of engineering plastics that contain up to 40% glass fibre. In addition, almost all of the machines are equipped with mould temperature controllers and robotic arms.











# Secondary Processes & Sub-Assembly Facilities

Spray Painting Booth [3m (L)] with Clean Room Facilities	2 units
Conveyor Oven [1000W x 15000L (mm)]	2 units
Batch Oven [900W x 2000L x 1760 (mm)]	1 unit
Pad Printing Machines	6 units
Ultrasonic Cleaning (Branson Brand) Machine Tank Dimension: 305W x 457L x 407H (mm) Water Depth: 305mm	1 unit
Branson Ultrasonic Welding Machine	1 unit
Assembly Lines	



# Quality & Engineering Measuring Instruments

No	Items	Brand	Resolution
1	Contour Measuring Machine (Contracer) 	Mitutoyo	0.0005mm
2	Non-Contact Vision Measuring Microscope 	Mitutoyo	0.0005mm
3	Measuring Microscope MF – 10207 	Mitutoyo	0.001mm
4	Gear Roll Tester	Osaka Semitsu	0.001mm
5	Profile Projector 	Mitutoyo	0.001mm
6	Rectangular Gauge Block Set Grade 1 (112 pieces)	Mitutoyo	--
7	Pin Gauges (0.20mm – 8.00mm)	Eisen	0.01mm steps
8	Micropak 5 2D-Data Processor	Mitutoyo	--
9	Range of Precision Measuring Instruments for Various Applications <ul style="list-style-type: none"> <li> Digital Micrometer</li> <li> Digital Caliper</li> <li> Low Force Micrometer</li> <li> Digital Height Gauge</li> </ul>	Mitutoyo Mitutoyo Mitutoyo Mitutoyo	0.001mm 0.01mm 0.01mm 0.001mm
10	Microscope 10X, 30X	Meiji	--







**Contour Measuring Machine**  
Mitutoyo Contracer CV2000





**Non Contact Vision Measuring Microscope**  
Mitutoyo QuickScope





**Profile Projector**  
Mitutoyo Brand



**Measuring Microscope**  
MF – 10207



# Types of Engineering Plastic Used In Injection Moulding Process

PSU	Polysulfone
PC	Polycarbonate
PEI	Polyether Imide
PA	Polyamide (Nylon)
POM	Polyoxymethylene
PPO	Polyphenylene Oxide
PPS	Polyphenylene Sulfide
PEEK	Polyethereyherketone
TPE	Themoplastic Elastomer
PET	Polyethylene Terephthalate
PBT	Polybutylene Terephthalate
PMMA	Polymethyl Methacrylate
ABS	Acrylonitrile-Butadiene-Styrene





# Selected Sources of Engineering Plastics from Europe & US



Sabic  
Industries



Dow Chemical  
Company



Victrex PLC



A. Schulman  
GmbH



Chevron Phillips  
Chemicals Asia P/L



Bayer  
Corporation



BASF  
Corporation



Gummiwerk  
Kraiburg GmbH  
& Co.



Clariant  
International  
Ltd



DuPont  
Engineering  
Polymer



DSM  
Engineering  
Plastics Far East

Continue ...



# Selected Sources of Engineering Plastics from Japan



**Mitsubishi Engineering Plastics Corp**

**Mitsubishi Kasei Corporation**

**Mitsubishi Rayon Co Ltd**

**AsahiKASEI**

**Asahi Kasei  
Corporation**

**TEIJIN**

**Teijin Chemicals  
Ltd**



**Techno Polymer  
Co Ltd**

**Polyplastics**

Solution Platform for Engineering Plastics™

**Polyplastics Co Ltd**

**TORAY**

**Toray Plastics  
(M) Sdn Bhd**

**Note: POLYPARTS is also involved in other sources  
specified by customers**

Continue ...



# Selected Sources of Engineering Plastics Compounders



**RTP Company**



**DIC (M) Sdn Bhd**

**Nippon Pigment  
(M) Sdn Bhd**

Note: POLYPARTS is also involved in other sources specified by customers



# Contact Us



- \* Registered Name : **POLYPARTS SDN. BHD.**
- \* Office / Factory Address : No 2, Persiaran Perindustrian Silibin 2,  
Kawasan Perindustrian Ringan Silibin,  
30100 Ipoh, Perak,  
Malaysia.
- \* Telephone No. : 605-5267071, 605-5276435
- \* Fax No. : 605-5267073
- \* Business Enquiries : [mktg@polyparts.com.my](mailto:mktg@polyparts.com.my)
- \* Website : [www.polyparts.com.my](http://www.polyparts.com.my)

