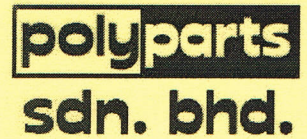


CORPORATE INFORMATION



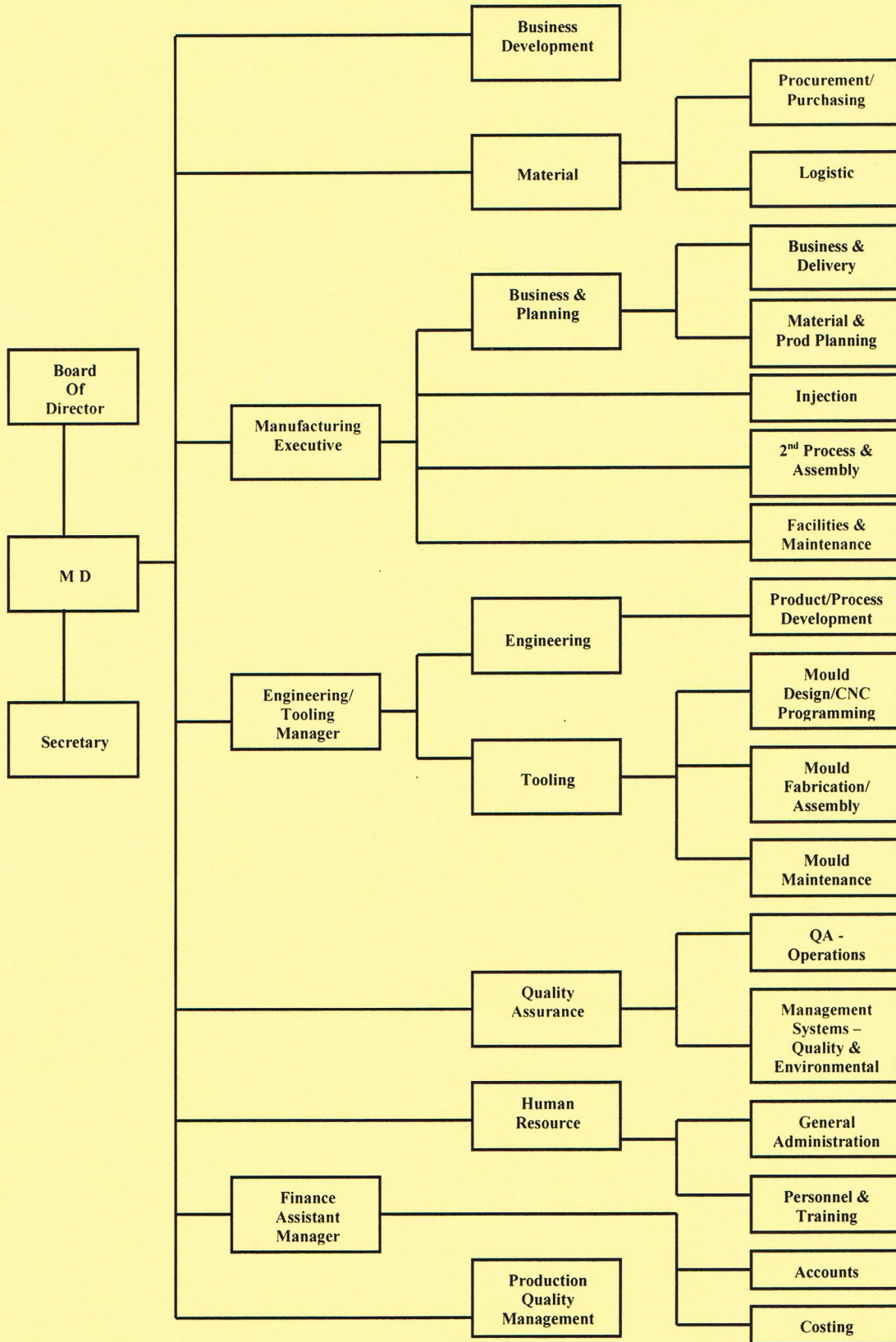
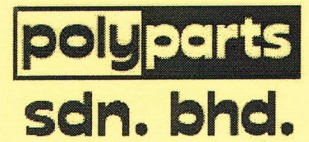
Registered Name : Polyparts Sdn. Bhd.
Company Registration No : 173293-T
Year of Incorporation : 1990
Office / Factory Address : No 2, Persiaran Perindustrian Silibin 2,
Kawasan Perindustrian Ringan Silibin,
30100 Ipoh, Perak Darul Ridzuan,
Malaysia.
Telephone No. : 605-5267071, 605-5276435
Fax No. : 605-5267073
E-mail Address : mktg@polyparts.com.my
Website : www.polyparts.com.my
Land Area : 6000sq. meter
Build-up area : 3000sq. meter
Paid-up Capital : RM4,707,000.00
Bankers : Malayan Banking Berhad, Jelapang Branch, Ipoh
Manufacturing Status : ISO 9001: 2008 Certified (Cert. No. AR1005)
ISO 14001: 2004 Certified (Cert. No. E863088)
Underwriters' Laboratories Inc. for Fabricated Parts
(UL No. E132714)
Association Memberships : Malaysian Plastics Manufacturers Association
Malaysian Mould and Die Association
Federation of Malaysian Manufacturers
Malaysian-German Chamber of Commerce and Industry
Perak Chinese Chamber of Commerce and Industry

ORGANIZATION STRUCTURE

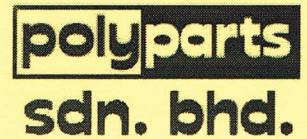


Work Force	: 108 Persons	
	Managers	- 2 persons
	Engineers & Executives	- 15 persons
	Officers	- 10 persons
	Technicians / Supervisors	- 27 persons
	Operational Assistants	- 12 persons
	Operators & Inspectors	- 42 persons
No of Shift	: 3 shifts, Monday – Saturday	
Office Hours	: Monday – Friday	8.00am – 6.00pm

ORGANISATION CHART



VISION & MISSION



VISION

To be a world class organisation providing complete engineering solutions & integrated manufacturing services in precision industries.

MISSION STATEMENT

Polyparts strives for continuous building of human capital, upgrading of engineering capabilities & systematic improvement of effective management in achieving excellent quality & yield and ensuring customer satisfaction in order to rise up in the supply value chain in precision industries.

QUALITY & ENVIRONMENTAL POLICY



ISO 9001 – QUALITY POLICY

- We are committed to ensure quality products and reliable services exceed customer requirements and expectations.
- Top and middle management are committed to provide quality leadership and develop all employees to be competent, skillful and knowledgeable.
- We pledge to practice in accordance with the requirements of ISO 9001 Quality Management System and persistently enhance its effectiveness.
- We pursue actively in the continuous improvement process and strive to achieve the quality objectives.

ISO 14001 – ENVIRONMENTAL POLICY

- To comply with all relevant applicable environmental legislations and regulations as per ISO 14001.
- To forbid the use of prohibited substances in materials and products so to avoid any pollution occur.
- To minimize generation of wastes and release of pollutants.
- To optimize the usage of natural resources at all times.
- To continually improve our environmental performance by setting and reviewing objectives periodically.

TOOLING EQUIPMENT & FACILITIES

i) Design Software

a) UG CAD / CAM Software Release 15	-1 unit
b) UG Mould Wizard	-1 unit
c) Autodesk Moldflow Adviser-2010-R2	-1 unit
d) AutoCAD Release 2000i	-3 units
e) NX Mach2 – 3 Axis Machining	-2 units
f) NX Mach3 – Mold Design	-2 units

ii) Tooling Equipment

a) CNC Vertical Machining Center	
- Makino Machining Center Model S33-A20	-1 unit
- Fanuc Robodrill A-Ti4FLb	-1 unit
b) CNC Electric Discharge Machine	
- Sodick AQ35L	-1 unit
c) CNC Wire-Cut	
- Sodick A320D Mark E21 Controller	-1 unit
- Sodick VZ300L LHZW	-1 unit
d) CNC High Speed EDM	
- Sodick AQ 35L/LN 1W	-1 unit
- Sodick AQ 35L/LN 1G	-1 unit
e) CNC EDM	
- Sodick Mould Maker 3 with NF 40 Controller	-1 unit
f) CNC Milling	
- Makino KE 55 with Professional JN CNC Controller	-1 unit
g) Super Drill	
- Ocean ZNC Drilling EDM-OCT-35252A	-1 unit
h) Surface Grinding Machine	
- Okamoto PFG – 350DX	-1 unit
- Okamoto PSG – 52ST	-1 unit
i) Lathe Machine	
- Leblond Makino Regal 400	-1 unit
j) Milling Machine	
- Kondia FV1	-1 unit
- Topone	-2 units

i) Injection Moulding Machines

a) 15MT clamping force	-1 unit
b) 20MT clamping force	-1 unit
c) 30MT clamping force	-2 units
d) 35MT clamping force	-1unit
e) 40MT clamping force	-6 units
f) 50MT clamping force	-3 units
g) 60MT clamping force	-4 units
h) 80MT clamping force	-2 units
i) 120MT clamping force	-2 units
j) 160MT clamping force	-1 unit
k) 250MT clamping force	-1 unit

The injection moulding machines are Sumitomo & Fanuc (Electric Injection Machine), Demag, Arburg & Nissei and they are equipped with harden screws and barrels for the running of engineering plastics which contain up to 40% glass fibre. In addition, almost all of the machines are equipped with mould temperature controllers and robotic arms.

ii) Secondary Processes and Sub-Assembly Facilities

a) Spray Painting Booth [3m (L)] with Clean Room Facilities	-2 units
b) Conveyor Oven [1000W x 15000L (mm)]	-2 units
c) Batch Oven [900W x 2000L x 1760 (mm)]	-1 unit
d) Pad Printing Machines	-6 units
e) Ultrasonic cleaning (Branson Brand) Machine	-1 unit
Tank Dimension: 305W x 457L x 407H (mm)	
Water Depth: 305mm	
f) Ultrasonic Welding Machine (Branson Brand)	-1 unit
g) Assembly Lines	

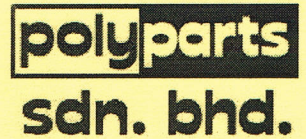
**QUALITY & ENGINEERING MEASURING
INSTRUMENTS**

No	Items	Brand	Resolution
1	Non-Contact Vision Measuring Microscope	Mitutoyo	0.0005mm
2	Measuring Microscope MM – 800/T	Nikon	0.0001mm
3	Vision Measurement Machine – WV30 2D CCD (NC)	WVvision	0.001mm
4	Measuring Microscope MF – 10207	Mitutoyo	0.001mm
5	Contracer	Mitutoyo	0.0005mm
6	Gear Roll Tester	Osaka Semitsu	0.001mm
7	Profile Projector with Accessories	Mitutoyo	0.001mm
8	Rectangular Gauge Block Set Grade 1 (112 pieces)	Mitutoyo	--
9	Pin Gauges (0.20mm – 8.00mm)	Eisen	0.01mm steps
10	Micropak 5 2D-Data Processor	Mitutoyo	--
11	Range of Precision Measuring Instruments For Various Applications <ul style="list-style-type: none"> • Digital Micrometer • Digital Caliper • Low Force Micrometer • Digital Height Gauge 	Mitutoyo Mitutoyo Mitutoyo Mitutoyo	0.001mm 0.01mm 0.01mm 0.001mm
12	Microscope 10X, 30X	Meiji	--

SOME OF THE ENGINEERING PLASTIC
USED IN INJECTION MOULDING PROCESS

PC	Polycarbonate
POM	Polyoxymethylene
PPO	Polyphenylene Oxide
PBT	Polybutylene Terephthalate
PA	Polyamide-Nylon
PPS	Polyphenylene Sulfide
PEI	Polyetherimide
PMMA	Polymethyl Methacrylate
PET	Polyethylene Terephthalate
ABS	Acrylonitrile-Butadiene-Styrene
TPE	Thermoplastic Elastomer

SOME SOURCES OF ENGINEERING PLASTICS
FROM EUROPE, US & JAPAN



Regions	Company Names
European & US Manufacturers	SABIC Innovative Plastics DuPont Engineering Polymer Bayer Corporation Chevron Philips Chemicals Asia Pte. Ltd. Clariant International Ltd. DSM Engineering Plastics Far East A.Schulman GmbH BASF Corporation DOW Chemical Company Gummiwerk Kraiburg GmbH &Co. Victrex plc
Japanese Manufacturers	Mitsubishi Engineering-Plastics Corp. Mitsubishi Kasei Corporation Mitsubishi Rayon Co. Ltd. Asahi Kasei Corporation Polyplastics Co. Ltd. Teijin Chemicals Ltd. Techno Polymer Co. Ltd. Toray Plastics (M) Sdn. Bhd.
Compounders	RTP Company LNP Engineering Plastics (M) Sdn. Bhd. Nippon Pigment (M) Sdn. Bhd. DIC (M) Sdn. Bhd.

Note: We can also deal with other sources specified by our customers.

LIST OF CUSTOMERS

Below are some of our current major customers: -

Customers

1. Canon Electronics, Malaysia
2. Emerson Process Management Asia Pacific Pte Ltd, Singapore
3. Logitech Europe SA, Switzerland
4. Topworx, USA
5. Emerson Electric (Asia) Ltd, China
6. Emerson Process Management Valve Automation (M) Sdn. Bhd., Malaysia
7. Fisher Controls Int'l Inc., USA
8. Benchmark Electronics, Malaysia
9. PNE Electric, Malaysia