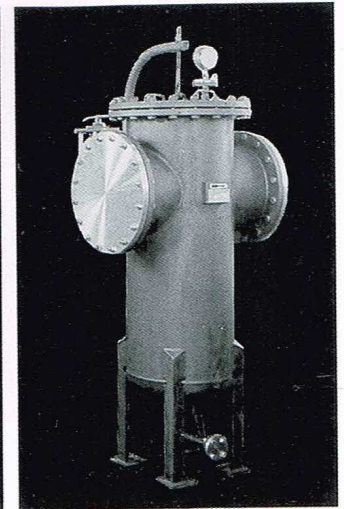


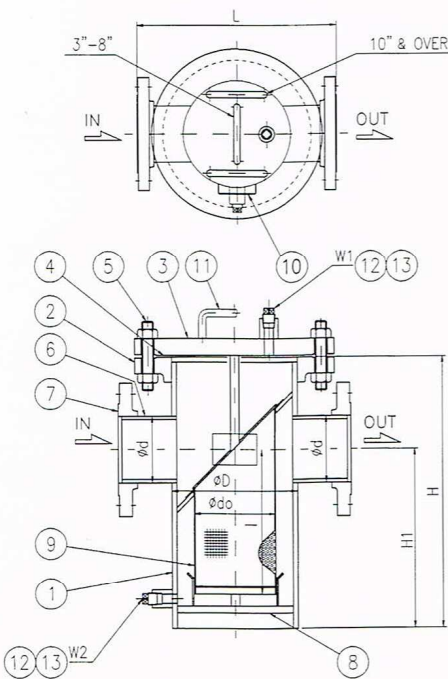
B1 TYPE

BUCKET STRAINERS

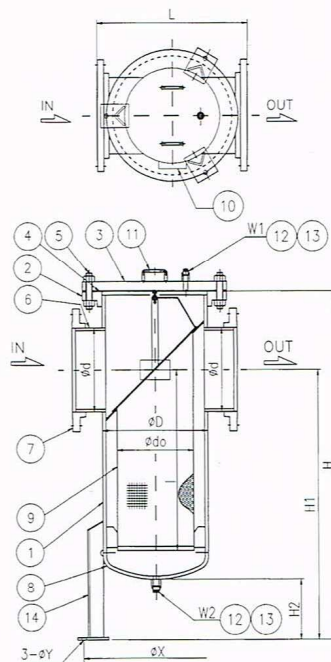
Bucket strainers are mainly installed in horizontal piping. Since the bucket strainer elements housed in the bodies can be taken out from the tops, the debris caught by the elements can be taken outside easily. The design of bucket strainers can be arranged to suit larger piping.



CONN.SIZE 1"~12"



CONN.SIZE OVER 14"



NO.	NAME
1	Body pipe
2	Body flange
3	Cover flange
4	Gasket
5	Bolt / nut
6	Line pipe
7	Line flange
8	Bottom plate
9	Element
10	Name plate
11	Handle
12	Drain / vent boss
13	Drain / vent plug
14	Leg

DIMENSION

unit:mm

CONN.SIZE	L		D	H	H ₁	ELEMENT		VENT/DRAIN		WEIGHT(kg)		
	φ d	150Lb				300Lb	φ d ₀	ℓ	W ₁	W ₂	150Lb	300Lb
25A	1"	180	260	3"	260	160	40	120	3/8"	3/8"	13	19
32	1 1/4"	200	260	3"	265	160	40	120	3/8"	3/8"	13	20
40	1 1/2"	260	340	4"	295	175	70	130	3/8"	1/2"	25	38
50	2"	260	340	4"	295	175	70	130	3/8"	1/2"	26	39
65	2 1/2"	330	390	5"	350	220	90	170	1/2"	1/2"	37	56
80	3"	340	430	6"	400	260	110	200	1/2"	1/2"	47	72
100	4"	400	500	8"	470	310	140	250	1/2"	1/2"	76	119
125	5"	480	580	10"	550	370	190	305	1/2"	3/4"	118	183
150	6"	500	600	10"	620	430	190	365	1/2"	3/4"	126	196
200	8"	560	680	12"	770	540	240	465	1/2"	3/4"	198	299
250	10"	610	760	14"	860	590	270	500	1/2"	1"	262	409
300	12"	700	840	16"	970	650	300	550	1/2"	1"	372	547

DIMENSION

unit:mm

CONN.SIZE	L		D	H	H ₁	H ₂	ELEMENT		VENT / DRAIN	L E G			WEIGHT (kg)
	φ d	150Lb					300Lb	φ d ₀		ℓ	W ₁ /W ₂	φ X	
350A	14"	750	900	18"	1550	1200	330	750	1"	650	23	M20	524
400A	16"	800	980	20"	1690	1310	370	870	1"	710	23	M20	661
450A	18"	900	1050	22"	1870	1450	420	1000	1"	740	23	M20	843
500A	20"	1000	1100	24"	2060	1610	460	1150	1"	820	27	M24	1067